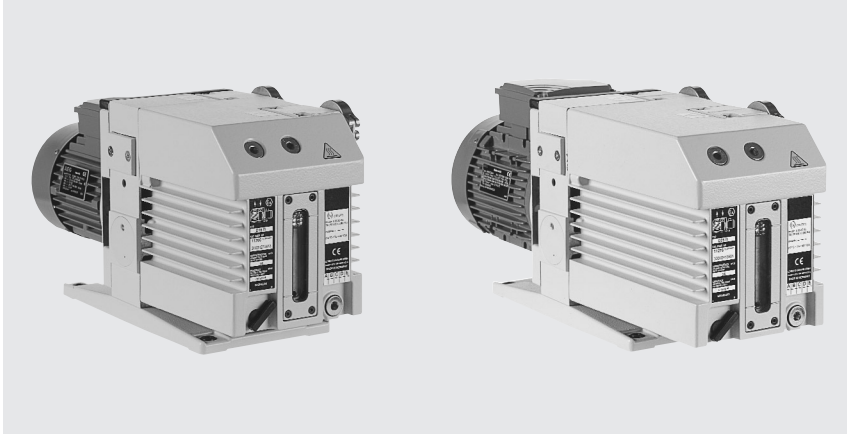
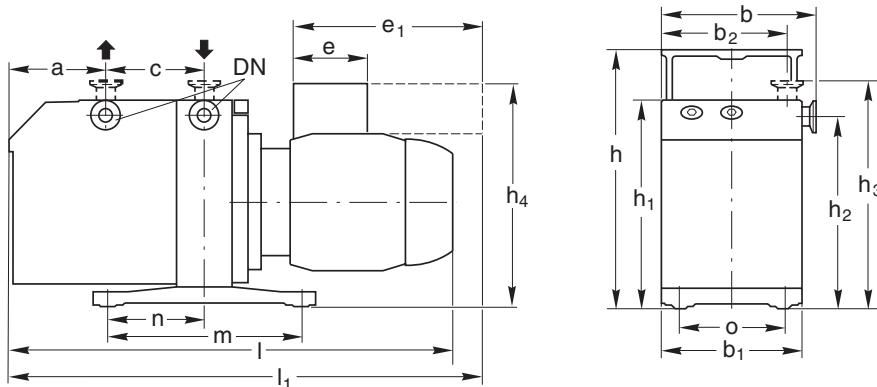


# TRIVAC D 16 B and D 25 B



TRIVAC D 16 B (left) and TRIVAC D 25 B (right)



USA pumps max. length  
 D 16 B: 560 mm (22.1")  
 D 25 B: 660 mm (26")

Type	DN	a	b	b <sub>1</sub>	b <sub>2</sub>	c	e	e <sub>1</sub>	h	h <sub>1</sub>	h <sub>2</sub>	h <sub>3</sub>	h <sub>4</sub>	l	l <sub>1</sub>	m	n	o	
D 16 B (Part No. 113 29)	25 KF	mm	82	190	177	150	135	-	266	298	250	226	263	271	-	566	280	140	132
		in.	3.23	7.48	6.97	5.91	5.32	-	10.47	11.73	9.84	8.90	10.35	10.67	-	22.28	11.02	5.51	5.20
D 16 B (Part No. 112 66, 113 33)	25 KF	mm	82	190	175	150	135	89	-	298	250	226	263	236	490	-	280	140	132
		in.	3.23	7.48	6.89	5.91	5.32	3.50	-	11.73	9.84	8.90	10.35	9.29	19.29	-	11.02	5.51	5.20
D 16 B (Part No. 140 160)	25 KF	mm	82	190	175	150	135	127	-	u. r.	u. r.	u. r.	u. r.	262	515	-	u. r.	u. r.	u. r.
		in.	3.23	7.48	6.89	5.91	5.32	5.0	-	u. r.	u. r.	u. r.	u. r.	10.32	20.28	-	u. r.	u. r.	u. r.
D 16 B (Part No. 112 65, 113 34)	25 KF	mm	82	190	175	150	135	111	-	298	250	226	263	262	507	-	280	140	132
		in.	3.23	7.48	6.89	5.91	5.32	4.37	-	11.73	9.84	8.90	10.35	10.32	19.96	-	11.02	5.51	5.20
D 16 B (Part No. 113 25)	25 KF	mm	82	190	175	150	135	111	-	298	250	226	263	262	512	-	280	140	132
		in.	3.23	7.48	6.89	5.91	5.32	4.37	-	11.73	9.84	8.90	10.35	10.32	20.16	-	11.02	5.51	5.20
D 25 B (Part No. 113 36, 113 39, 113 48)	25 KF	mm	142	190	177	150	135	-	266	298	250	226	263	271	-	626	280	140	132
		in.	5.59	7.48	6.97	5.91	5.32	-	10.47	11.73	9.84	8.90	10.35	10.67	-	24.65	11.02	5.51	5.20
D 25 B (Part No. 112 76)	25 KF	mm	142	190	177	150	135	111	-	298	250	226	263	262	566	-	280	140	132
		in.	5.59	7.48	6.97	5.91	5.32	4.37	-	11.73	9.84	8.90	10.35	10.32	22.28	-	11.02	5.51	5.20
D 25 B (Part No. 112 75)	25 KF	mm	142	190	177	150	135	111	-	298	250	226	263	262	568	-	280	140	132
		in.	5.59	7.48	6.97	5.91	5.32	4.37	-	11.73	9.84	8.90	10.35	10.32	22.36	-	11.02	5.51	5.20
D 25 B (Part No. 113 35)	25 KF	mm	142	190	177	150	135	111	-	298	250	226	263	262	573	-	280	140	132
		in.	5.59	7.48	6.97	5.91	5.32	4.37	-	11.73	9.84	8.90	10.35	10.32	22.56	-	11.02	5.51	5.20
D 25 B (Part No. 140 170)	25 KF	mm	142	190	177	150	135	127	-	u. r.	u. r.	u. r.	u. r.	262	576	-	u. r.	u. r.	u. r.
		in.	5.59	7.48	6.97	5.91	5.32	5.0	-	u. r.	u. r.	u. r.	u. r.	10.32	20.28	-	u. r.	u. r.	u. r.

u. r. = upon request

Dimensional drawing for the TRIVAC D 16 and D 25 B

## Technical Data

### TRIVAC D 16 B two-stage

### TRIVAC D 25 B two-stage

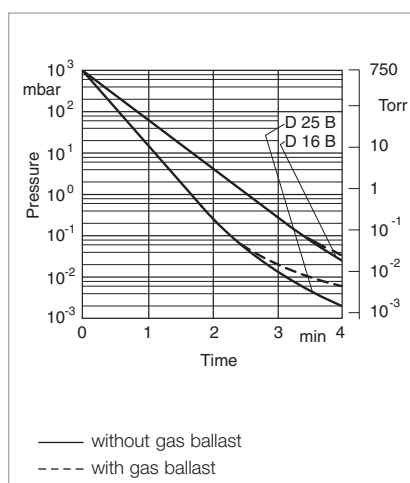
		50 Hz	60 Hz	50 Hz	60 Hz
Nominal pumping speed <sup>1)</sup>	m <sup>3</sup> x h <sup>-1</sup> (cfm)	18.9 (11.1)	22.7 (13.4)	29.5 (17.4)	35.4 (20.9)
Pumping speed <sup>1)</sup>	m <sup>3</sup> x h <sup>-1</sup> (cfm)	16.5 (9.7)	19.8 (11.7)	25.7 (15.1)	30.8 (18.2)
Ultimate partial pressure without gas ballast <sup>1)</sup>	mbar (Torr)	10 <sup>-4</sup> (0.75 x 10 <sup>-4</sup> )	10 <sup>-4</sup> (0.75 x 10 <sup>-4</sup> )	10 <sup>-4</sup> (0.75 x 10 <sup>-4</sup> )	10 <sup>-4</sup> (0.75 x 10 <sup>-4</sup> )
Ultimate total pressure without gas ballast <sup>1)</sup>	mbar (Torr)	< 2 x 10 <sup>-3</sup> (1.5 x 10 <sup>-3</sup> )	< 2 x 10 <sup>-3</sup> (1.5 x 10 <sup>-3</sup> )	< 2 x 10 <sup>-3</sup> (1.5 x 10 <sup>-3</sup> )	< 2 x 10 <sup>-3</sup> (1.5 x 10 <sup>-3</sup> )
Ultimate total pressure with gas ballast <sup>1)</sup>	mbar (Torr)	< 5 x 10 <sup>-3</sup> (3.8 x 10 <sup>-3</sup> )	< 5 x 10 <sup>-3</sup> (3.8 x 10 <sup>-3</sup> )	< 5 x 10 <sup>-3</sup> (3.8 x 10 <sup>-3</sup> )	< 5 x 10 <sup>-3</sup> (3.8 x 10 <sup>-3</sup> )
Water vapor tolerance <sup>1)</sup>	mbar (Torr)	25 (18.8)	25 (18.8)	25 (18.8)	25 (18.8)
Water vapor capacity	g/h	305	305	476	476
Oil filling, min. / max.	l (qt)	0.5 / 1.0 (0.5 / 1.1)	0.5 / 1.0 (0.5 / 1.1)	0.6 / 1.4 (0.6 / 1.5)	0.6 / 1.4 (0.6 / 1.5)
Noise level <sup>2)</sup> to DIN 45 635, without / with gas ballast	dB(A)	52 / 62	52 / 62	52 / 62	52 / 62
Admissible ambient temperature	°C (°F)	12 - 40 (54 - 104)	12 - 40 (54 - 104)	12 - 40 (54 - 104)	12 - 40 (54 - 104)
Motor rating <sup>2)</sup>	W (HP)	550 - 750 (0.75 - 1.0)	550 - 750 (0.75 - 1.0)	750 (1)	750 (1)
Nominal speed	rpm	1500	1800	1500	1800
Type of protection <sup>3)</sup>	IP	54	54	54	54
Weight <sup>2)</sup>	kg (lbs)	26 (57.3)	26 (57.3)	32 (70.6)	32 (70.6)
Connections, Intake and Exhaust	DN	25 KF	25 KF	25 KF	25 KF

<sup>1)</sup> To DIN 28 400 and following numbers

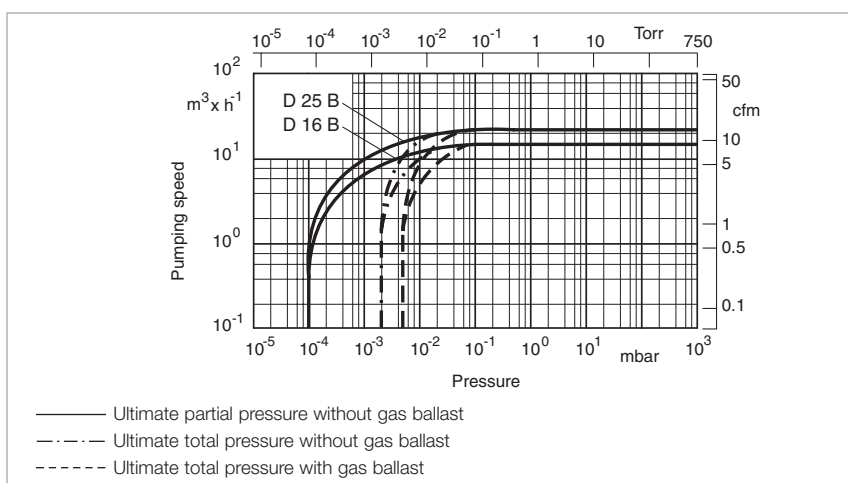
<sup>2)</sup> Weight, motor rating and noise levels for the pumps with global version AC motor, 50 Hz, only.

Any data that deviate from the above for pumps with other motors, and other motor-dependent data are given in section "Products", paragraph "Motor Dependent Data for the TRIVAC B, BCS and BCS-PFPE"

<sup>3)</sup> Global versions only. North and South American versions are TEFC



Pump-down characteristics of a 100 l vessel at 50 Hz



Pumping speed characteristics at 50 Hz (60 Hz curves at the end of the section)

## Ordering Information

### TRIVAC D 16 B two-stage

### TRIVAC D 25 B two-stage

TRIVAC B		
without motor	<b>Part No. 113 28</b>	<b>Part No. 113 38</b>
with 1-phase motor		-
230 V, 50 Hz <sup>1)</sup>	<b>Part No. 112 65</b>	
230 V, 50/60 Hz <sup>1)</sup>	<b>Part No. 113 25 <sup>2)</sup></b>	<b>Part No. 113 35 <sup>2)</sup> / 112 75</b>
100 V, 50 Hz / 110 V, 60 Hz	<b>upon request</b>	<b>upon request</b>
115 V, 60 Hz	-	<b>Part No. 113 48</b>
with 3-phase motor		
230/400 V, 50 Hz / 250/440 V, 60 Hz <sup>1)</sup>	<b>Part No. 112 66</b>	<b>Part No. 112 76</b>
230/400 V, 50 Hz / 250/440 V, 60 Hz	<b>Part No. 113 33 (RCF - E96N)</b>	-
200/346 V, 50 Hz / 208/360 V, 60 Hz	<b>Part No. 113 34 (RCF - E96N)</b>	-
230/400 V, 50 Hz, ATEX Category 3 inside and 3 outside		
inside: II (j) 3G IIC T4 (50 Hz)	<b>Part No. 140 160</b>	<b>Part No. 140 170</b>
outside: II (o) 3G IIC T3 (50 Hz)		

## Accessories

FS 8-16 dust filter	<b>Part No. 186 10</b>	<b>Part No. 186 10</b>
AS 8-16 dust separator	<b>Part No. 186 11</b>	<b>Part No. 186 11</b>
MF 8-16 molecular filter	<b>Part No. 186 12</b>	<b>Part No. 186 12</b>
FA 8-16 fine vacuum adsorption trap	<b>Part No. 187 10</b>	<b>Part No. 187 10</b>
Adsorption trap with aluminium oxide	<b>Part No. 854 15</b>	<b>Part No. 854 15</b>
Activated aluminium oxide, 1.3 kg (2 l approx.)	<b>Part No. 854 10</b>	<b>Part No. 854 10</b>
AF 16-25 exhaust filter	<b>Part No. 189 11</b>	<b>Part No. 189 11</b>
AR 16-25 exhaust filter with lubricant return	<b>Part No. 189 21</b>	<b>Part No. 189 21</b>
AK 16-25 condensate trap	<b>Part No. 188 11</b>	<b>Part No. 188 11</b>
OF 4-25 mechanical oil filter	<b>Part No. 101 91</b>	<b>Part No. 101 91</b>
CF 4-25 chemical oil filter	<b>Part No. 101 96</b>	<b>Part No. 101 96</b>
Connector for gas ballast inlet M 16 x 1.5 – DN 16 KF	<b>Part No. 168 40</b>	<b>Part No. 168 40</b>
Oil drain tap	<b>Part No. 190 90</b>	<b>Part No. 190 90</b>

## Spare Parts

Inside section		
Seal kit		

<sup>1)</sup> Certification after 94/9/EG (ATEX), Category 3 inside. Inside: II (j) 3G IIC T4 (50 Hz), T3 (60 Hz)

<sup>2)</sup> with cable Euro-Schuko. Other cables upon request